

## Request For Quotation

Order the parts you need from our real-time inventory database. Simply complete a request for quotation form with your part information and a sales representative will respond to you with price and availability.

[Request For Quotation](#)

**Your free datasheet starts on the next page.**

More datasheets and data books are available from our homepage: <http://www.datasheetarchive.com>

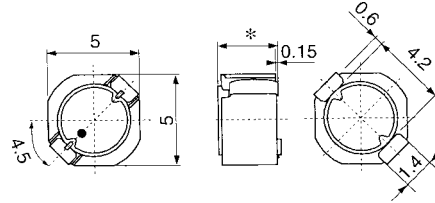
## TYPE D53LC

Frequency Range: 0.1 - 1MHz  
Inductance Range: 1.1 - 220μH



### Features

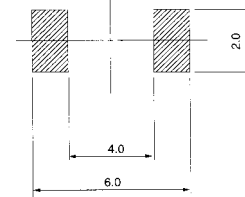
- Low profile (3.0mm max.)
- Magnetically shielded
- Available on tape and reel for auto-insertion
- Suitable for reflow soldering



\* : D52LC: 2.0 max.  
D53LC: 3.0 max.

Unit: mm

### Recommended patterns:



Unit: mm

## STANDARD PARTS SELECTION GUIDE

- (1) Inductance is measured by LCR-meter 4284A (HP) or equivalent.  
(2) DC Resistance is measured by Digital Multimeter TR6871 (Advantest) or equivalent.

- (3) Maximum allowable DC current is that which causes a 30% inductance reduction from the initial value, or coil temperature to rise by 40°C, whichever is smaller. (Reference ambient temperature 20°C).

### TYPE D53LC (Type A)

TOKO Part Number	Lo (μH)	Inductance		DC Resistance Spec (mΩ) max.	Rated DC Current <sup>(3)</sup>	
		Tolerance %	Test Freq. (kHz)		Δ L/L=30% (A) max.	Δ T=40°C (A) max.
A915AY-1R1M=P3	1.1	± 20	100	20	3.87	3.25
A915AY-2R0M=P3	2.0	± 20	100	27	2.92	2.64
A915AY-3R3M=P3	3.3	± 20	100	34	2.36	2.26
A915AY-4R7M=P3	4.7	± 20	100	45	1.87	2.01
A915AY-6R8M=P3	6.8	± 20	100	68	1.51	1.65
A915AY-100M=P3	10	± 20	100	90	1.33	1.41
A915AY-150M=P3	15	± 20	100	142	1.05	1.10
A915AY-220M=P3	22	± 20	100	208	0.86	0.81
A915AY-330M=P3	33	± 20	100	257	0.72	0.75
A915AY-470M=P3	47	± 20	100	352	0.62	0.64
A915AY-680M=P3	68	± 20	100	525	0.51	0.52
A915AY-101M=P3	100	± 20	100	801	0.43	0.44

### TYPE D53LC (Type B)

TOKO Part Number	Lo (μH)	Inductance		DC Resistance Spec (mΩ) max.	Rated DC Current <sup>(3)</sup>	
		Tolerance %	Test Freq. (kHz)		Δ L/L=30% (A) max.	Δ T=40°C (A) max.
A915BY-4R7M=P3	4.7	± 20	100	35	1.13	2.18
A915BY-6R8M=P3	6.8	± 20	100	50	0.99	1.81
A915BY-100M=P3	10	± 20	100	67	0.74	1.50
A915BY-150M=P3	15	± 20	100	97	0.58	1.28
A915BY-220M=P3	22	± 20	100	135	0.51	1.12
A915BY-330M=P3	33	± 20	100	206	0.41	0.88
A915BY-470M=P3	47	± 20	100	268	0.34	0.75
A915BY-680M=P3	68	± 20	100	371	0.29	0.64
A915BY-101M=P3	100	± 20	100	569	0.26	0.51
A915BY-151M=P3	150	± 20	100	940	0.21	0.38
A915BY-221M=P3	220	± 20	100	1200	0.18	0.33

Note: =P3 is added to each part number to indicate tape and reel packaging.